

ESG Company Data

ICE's ESG Company Data provides granular data on companies that is collected and quality controlled by ICE, to offer continuously updated information on ESG risks and opportunities. The data covers a comprehensive set of datapoints such as greenhouse gas (GHG) emissions, board and workforce diversity. A proprietary security mapping service allows the data to be available across a broad range of fixed income and equity securities.

Coverage

560+ data attributes and indicators

15,000+ entities*

1.2+ million corporate bonds and **33,000+ equity instruments**

Continuously updated data as it is disclosed by companies

Key features



Security linkage – With experience in researching corporate structures through our ICE Business Entity Service, our data is linked to individual fixed income and equity securities using ICE's corporate hierarchy entity data. This allows users to analyze data at the individual investment level.



Regulatory data – To aid in compliance with SFDR, we offer the SFDR Principle Adverse Impact (PAI) solution. Provided in conjunction with RepRisk, ICE offers continuously updated input values for mandatory corporate SFDR indicators and can provide optional indicators.



Quality data collection – Data is sourced and quality controlled through our dedicated team of reference data specialists. We aim to provide extensive and continuously updated coverage of multiple data sources.



Controversy data – To provide greater transparency into the risks of public companies, we offer controversy data from RepRisk, an ESG data science company. This risk-focused data set provides detailed metrics related to how a company manages its business, based on third-party, publicly available sources external to a company.



BofA ESG Meter™ – We provide access to the BofA ESG Meter™, a quantitative assessment, created by Bank of America using ICE's ESG Company Data, which rates a company's ESG performance relative to its peer group.

* Includes direct entities and subsidiaries.



ESG data framework

Over 560 data attributes and indicators organized using the following framework:



Environmental

- Emissions reduction targets
- GHG emissions
- Renewable energy
- Toxic air emissions
- Waste
- Water efficiency



Social

- Benefits
- Diversity and inclusion
- Employee training
- Human capital
- Operational performance
- Product quality and safety



Governance

- Board profile
- Board skillset
- Business ethics
- Compensation
- Ownership and control
- Sustainable development goals

Key benefits

360° view of ESG risk –

Granular data coupled with an ESG assessment and risk data provides a 360-degree view of ESG factors.

Continuously updated data –

We continuously monitor and update company profiles throughout the year.

End-to-end market coverage –

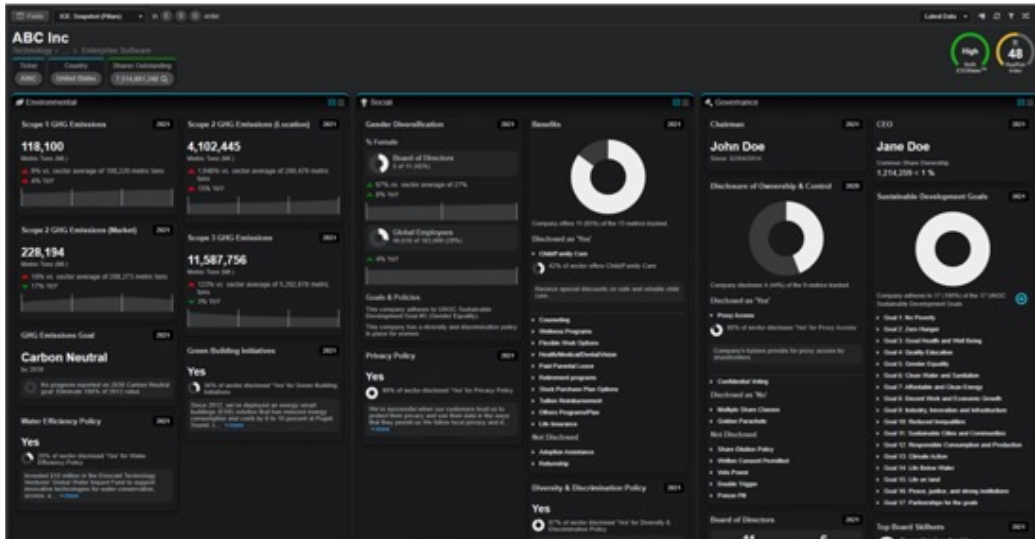
With coverage of both equity and fixed income securities, we can support your full portfolio needs.

Use cases

- **Portfolio management** – Identify securities for investment and ongoing management of a portfolio. Whether selecting based on client driven impact requirements, reducing risk, or generating excess returns, ICE's ESG Company Data provides the granularity to help ensure a thorough selection process.
- **Scoring** – A broad range of data points with history and broad entity coverage allows users to create scores based upon their own motivations and areas of focus.
- **Client reporting** – Metrics in client mandates can be aggregated and selected from the detailed data in our product.
- **Regulatory reporting** – The detailed requirements for reporting data to clients and regulators under SFDR and the EU Green Taxonomy have been applied to our ESG Company Data to aid your reporting.
- **Risk management** – Using both company reported data as well as external data from RepRisk allows users to conduct detailed risk assessments and to best manage risk from an ESG perspective.
- **Research** – Focus on ESG-related attributes that may correlate to financial performance as part of an investment strategy.

Delivery

Choose from a variety of delivery options including file based, or API to systematically deliver data into your investment processes. A sleek, user-friendly interface allows for easy search, comparison, and analysis.



User-friendly, customizable dashboard



Detailed ESG metrics with historical data



Cross-compare companies and sectors



Standardized metrics



Controversy metrics



Downloadable reports



Screening and search functionality

 **Learn more**
ice.com/sustainable-finance-data

Limitations

This document contains information that is confidential and proprietary property and/or trade secret of Intercontinental Exchange, Inc. and/or its affiliates, is not to be published, reproduced, copied, disclosed or used without the express written consent of Intercontinental Exchange, Inc. and/or its affiliates.

This document is provided for informational purposes only. The information contained herein is subject to change and does not constitute any form of warranty, representation, or undertaking. Nothing herein should in any way be deemed to alter the legal rights and obligations contained in agreements between Intercontinental Exchange, Inc. and/or any of its affiliates and their respective clients relating to any of the products or services described herein. Nothing herein is intended to constitute legal, tax, accounting, investment or other professional advice.

Intercontinental Exchange, Inc. and its affiliates, makes no warranties whatsoever, either express or implied, as to merchantability, fitness for a particular purpose, or any other matter. Without limiting the foregoing, Intercontinental Exchange, Inc. and its affiliates makes no representation or warranty that any data or information (including but not limited to evaluations) supplied to or by it are complete or free from errors, omissions, or defects.

Fixed income evaluations, continuous evaluated pricing, end-of-day evaluations, evaluated curves, model-based curves, market sentiment scores, and Fair Value Information Services related to securities are provided in the US through ICE Data Pricing & Reference Data, LLC and internationally through ICE Data Services entities in Europe and Asia Pacific. ICE Data Pricing & Reference Data, LLC is a registered investment adviser with the US Securities and Exchange Commission. Additional information about ICE Data Pricing & Reference Data, LLC is available on the SEC's website at adviserinfo.sec.gov. A copy of ICE Data Pricing & Reference Data, LLC's Form ADV is available upon request.

ICE Data Services refers to a group of products and services offered by certain Intercontinental Exchange, Inc. (NYSE:ICE) companies and is the marketing name used for ICE Data Services, Inc. and its subsidiaries globally, including ICE Data Indices, LLC, ICE Data Pricing & Reference Data, LLC, ICE Data Services Europe Limited and ICE Data Services Australia Pty Ltd. ICE Data Services is also the marketing name used for ICE Data Derivatives, Inc., ICE Data Analytics, LLC certain other data products and services offered by other affiliates of Intercontinental Exchange, Inc. (NYSE:ICE).

Trademarks of Intercontinental Exchange, Inc. and/or its affiliates include: Intercontinental Exchange, ICE, ICE block design, NYSE, ICE Data Services, ICE Data and New York Stock Exchange. Information regarding additional trademarks and intellectual property rights of Intercontinental Exchange, Inc. and/or its affiliates is located at ice.com/terms-of-use. Other products, services, or company names mentioned herein are the property of, and may be the service mark or trademark of, their respective owners.